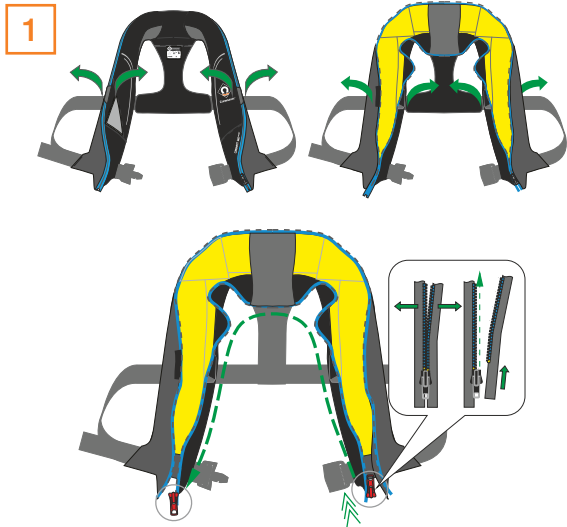
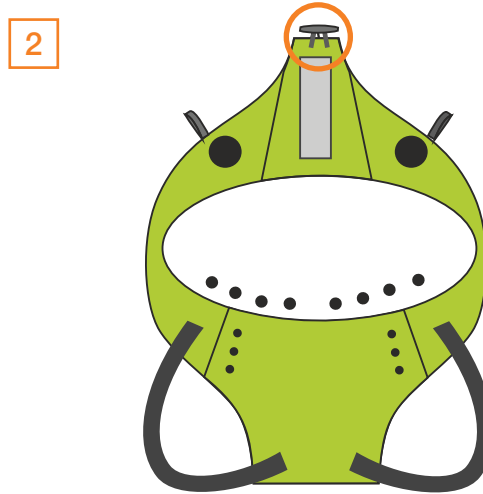


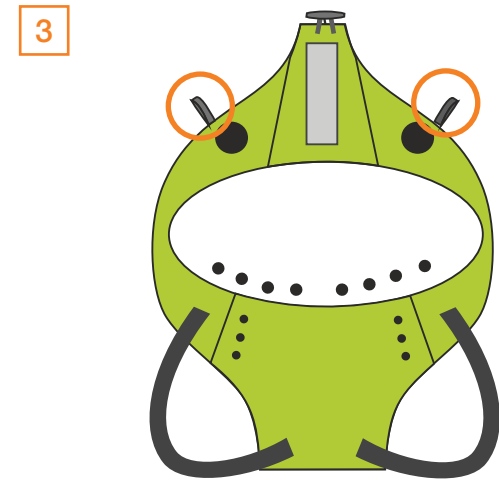
CREWSAVER HOOD FITTING INSTRUCTIONS FOR CREWFIT 180N PRO



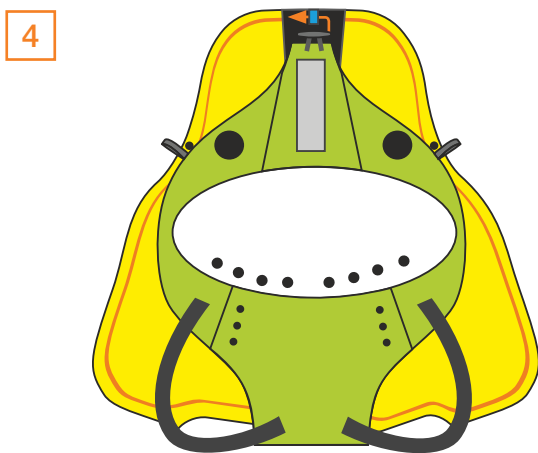
1 Unpack lifejacket by opening burst points and running your finger around the jacket. Run the zip to the left side (operating head side) ready for re-packing.



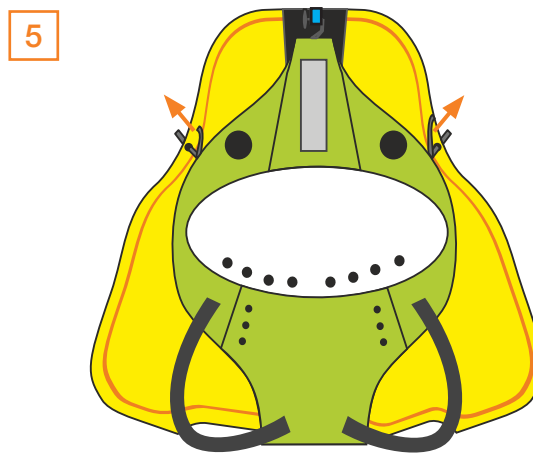
2 Locate the toggle at the top of the hood.



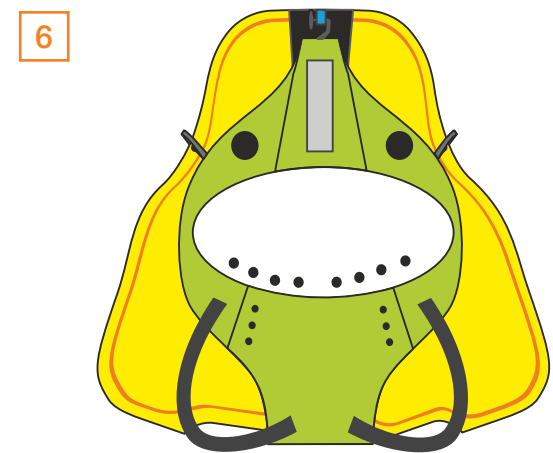
3 Locate the velcro tabs on the sides of the hood.



4 Place hood on top of jacket and pass toggle through loop.



5 Fasten velcro through punched holes in bladder fabric.



6 Your hood is now fitted securely to your lifejacket and ready for use. Follow standard packing procedures for packing your lifejacket with hood.