

Verricelli Verticali

Vertical Windlasses

CONSERVARE QUESTO MANUALE A BORDO
STORE THIS MANUAL ON BOARD
CONSERVER CE MANUEL A BORD
DIESES HANDBUCH AN BORD AUFBEWAHREN
GUARDAR ESTE MANUAL A BORDO

MANUALE DI INSTALLAZIONE E D'USO - INSTALLATION AND USER'S MANUAL
MANUEL D'INSTALLATION ED D'UTILISATION - MANUAL DE INSTALACIÓN Y USO
INSTALLATION UND BEDIENUNG

SX5

3
Years Limited
Warranty
*

UK



Low Profile



With drum

Lofrans[®]
WINDLASSES
THE ORIGINAL WINDLASS



Via Philips, 5 - 20052 Monza (MB) (Italy)
www.lofrans.com - e-mail: contact@lofrans.com



Dear Customer,

Thank you for choosing a Lofrans product. Lofrans is a leader company in the production and worldwide distribution of nautical systems manufactured according to the most modern technologies, in compliance with international regulation requirements and the most important certifying bodies. All our products are manufactured with excellent materials suited for operations in marine environments and are subject to continuous checks to improve the qualitative levels and make them without any manufacturing defects. Together with such requirements, Lofrans anchor windlasses are a synthesis of reliability and efficiency, by guaranteeing the maximum performances during each phase of mooring, even in the most difficult. With a Lofrans product, years of reliable operations are guaranteed.

Lofrans ©copyright, 2023. All rights reserved.

Lofrans declines any liability for possible inaccuracies due to print errors in this manual and reserves the right to introduce any changes deemed appropriate. For this reason, Lofrans does not guarantee the accuracy of the manual after the date of issue and declines all liability for possible errors and omissions.

TABLE OF CONTENTS

1 INTRODUCTION	3	5.2 Weighing the anchor	9
1.1 Purpose of the manual	3	5.3 Use of the warping drum	9
1.2 Assistance	3	5.4 Notes for use	10
1.3 Receipt and storage	3		
2 SAFETY INFORMATION	3	6 MAINTENANCE	10
		6.1 Maintenance programme	10
		6.2 Gipsy maintenance/replacement	11
3 INSTALLATION	4	7 TROUBLESHOOTING	11
3.1 Contents of the package	4		
3.2 Equipment necessary for installation	4	8 TECHNICAL DATA	13
3.3 Recommended accessories	4		
3.4 General requirements for installation	4	9 SPARE PARTS	14
3.5 Prevention from electrolysis	5		
3.6 Deck thickness	5	10 OVERALL DIMENSIONS	16
3.7 Deck installation	5		
3.8 Under deck installation	5	11 DRILLING TEMPLATE	17
3.9 Chain insertion	6		
4 ELECTRICAL SYSTEM	6	12 WARRANTY CONDITIONS	18
4.1 Electrical cable section	6	12.1 Conditions and limits	18
4.2 Solenoid valves (Control Box)	6	12.2 Exceptions	18
4.3 Circuit breakers	6	12.3 Liability	18
4.4 Remote control electric panel board	6	12.4 Procedure	18
4.5 Wiring diagram	7	12.5 Clause of Termination	18
		12.6 Compliance	18
5 USE OF THE ANCHOR WINDLASS	8		
5.1 Lowering the anchor	8		
5.1.1 Lowering the anchor electrically	8		
5.1.2 Lowering the anchor by gravity	9		

PRODUCT COMPLIANT WITH EC REGULATIONS

1 INTRODUCTION

1.1 Purpose of the manual

This manual will supply information on safety and correct use of the product. Follow these warnings carefully to avoid possible accidents or damages.

DANGER!

A warning such as this indicates the existence of a serious risk that has high probabilities to cause death or a serious accident if appropriate precautions are not taken.

ATTENTION!

A warning such as this indicates a reference to the application of safety practices, or draws the attention on unsafe behaviours that might cause personal injuries or damages to the boat.

1.2 Assistance

The Lofrans products are backed throughout the world by a network of authorised distributors and assistance. In case of need, please contact your local Lofrans distributor. Details on website www.lofrans.com

1.3 Receipt and Storage

Upon receipt of the package, verify the integrity of packing. Should it be necessary to store the product for a prolonged period, keep it in a dry and protected place.

2 SAFETY INFORMATION

Safety standards and certifying bodies require peremptorily that, during the standing of the anchor, the load must be held by a chain stopper or a high resistance fixing point. The user is responsible for guaranteeing that during navigation the anchor is properly stowed and fixed. This precaution is more important when the navigation speed is higher and sea conditions are worse. Indeed, an anchor paid out by mistake during navigation can have very serious effects. Considering its position and not always frequent use, the anchor windlass is particularly exposed to oxidation and corrosion risk; therefore, it is necessary to arrange a constant inspection of its parts and a due maintenance. Make sure to have read and understood every part of this manual before proceeding with installation and use. Only persons who know how to operate should be authorised to use the anchor windlass. Should there be doubts on its installation or use, refer always to a skilled consultant.

- Anchor windlasses used in an inappropriate way can cause damages to persons and/or things.
- Pay the utmost attention during the use of powerful equipment.
- Even the most careful use can be a source of damages, even serious.
- Lofrans products are supplied exclusively for recreational nautical use. Lofrans declines all responsibility for improper uses.
- Pay the utmost attention so that arms, legs, fingers, hair, and clothes do not get entangled in the chain or gypsy.
- Before operating the capstans, make sure that there are no persons in water in the vicinity.
- When the capstan is not used, the anchor must always be fixed to a solid point in order to avoid damages.
- The anchor windlass must never be used as mooring point. The load must always be held by a specific leaf or solid point.
- The capstan must not be used for functions other than paying out or weighing the anchor.
- The chain must never be used on the warping drum.
- The system must always be protected by a suitable circuit breaker.
- Disconnect always the circuit through the circuit breaker when the anchor windlass is not in use.

UK

3 INSTALLATION

3.1 Contents of the package

In addition to the present manual, the package contains:

- ✓ Anchor windlass complete with motor reducer
- ✓ Control box (for DC variants)
- ✓ Handle
- ✓ Screws

3.2 Equipment necessary for installation

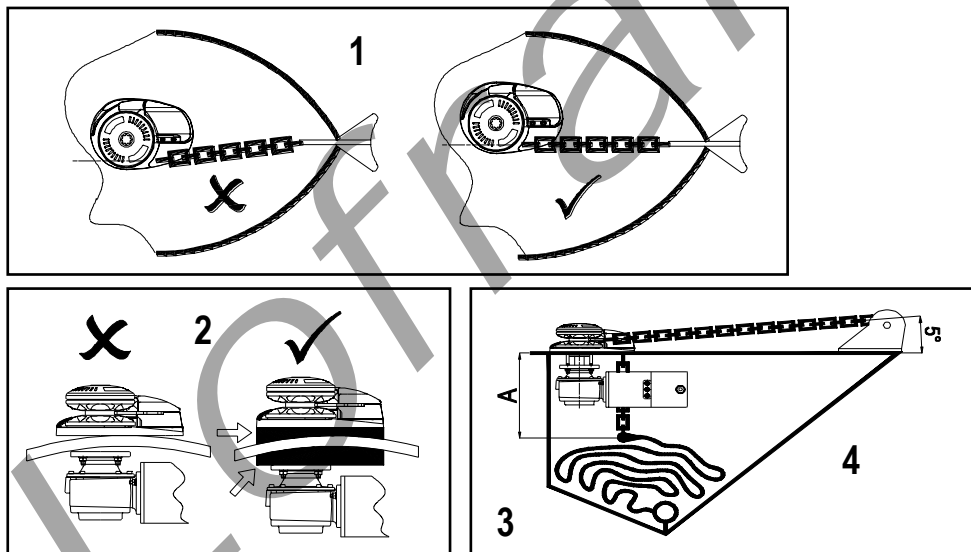
- ✓ Drill
- ✓ 6 and 16 mm bit for wood and steel
- ✓ 60mm diameter hollow drill bit
- ✓ 10 mm., 13 mm., and 17 mm. hexagon keys

3.3 Recommended accessories

Use exclusively original Lofrans accessories and spare parts, designed and manufactured to ensure performances, duration and for keeping valid the warranty. For information on available spare parts, contact your local reseller or visit website www.lofrans.com

3.4 General requirements for installation

In order to operate the anchor windlass correctly, it must be installed to meet the following conditions:



1. Bow roller alignment: the precise alignment of the anchor windlass to the bow roller is essential for the correct operation of the anchor windlass.

2. The parallelism between deck floors must be guaranteed; should it not occur, duly compensate the difference.

3. Chain locker depth: the chain fall into the chain locker must be such that when the chain is completely stored, there must be a minimum of 300 mm. between the underside of the deck and the top of the heaped chain.

4. Bow roller height: it must be such to guarantee a chain inclination lower than 5 degrees.



Non-observance of these requirements will cause the malfunctioning of the anchor windlass and voidance of warranty.

3.5 Prevention from electrolysis

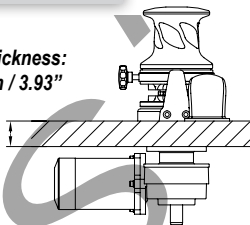
For aluminium boats, it is essential that the anchor windlass be insulated from the deck through a non-conductive gasket (not supplied). In addition, it is important that also the anchor and the chain be insulated from the hull, including chain stopper and fixing systems.

 Without these precautions, the electrolysis phenomenon will lead to a rapid corrosion of the anchor windlass.

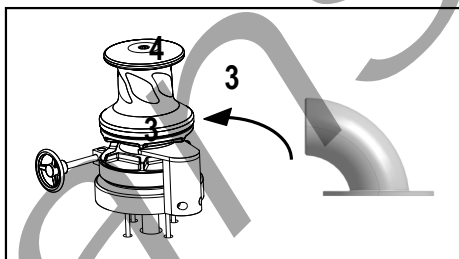
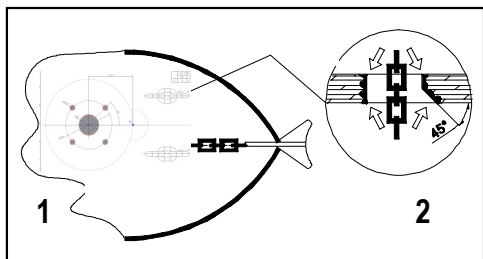
3.6 Deck thickness


The area of the deck where the capstan is mounted must be solid and resistant so to be able to support the stresses due to the recovery of the anchor. The standard series studs allow an admissible range of deck thickness of 100 mm. Upon request, different deck thicknesses may be provided.

Deck thickness:
100 mm / 3.93"



3.7 Deck installation



 Chain pipe installation is suggested in order to guide the chain properly aligned to the chain locker and keep windlass efficiency high*

1. Place carefully the drilling template on the deck, by ensuring the **correct alignment** with the bow.
2. Mark and drill as indicated in the figure. Let the edges of the holes sharp, while the edge side of the holes of the chain towards the bow must be smoothed for an angle of 45° degree.
3. Place carefully the upper part of the anchor windlass on the deck.

Note:

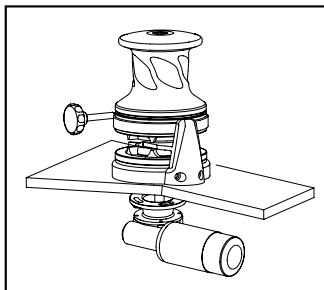
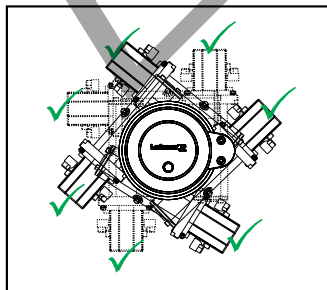
It is recommended to seal the base of the anchor windlass to the deck by means of silicone glue. Do not use a permanent glue to fix the base of the anchor windlass to the deck since this will make difficult the removal in case of maintenance or intervention.

*Chain Pipe Selection

Code	636311	636312	636313	636314
for windlass	SX2 & SX3	SX3,5	SX4	SX5

3.8 Under deck installation

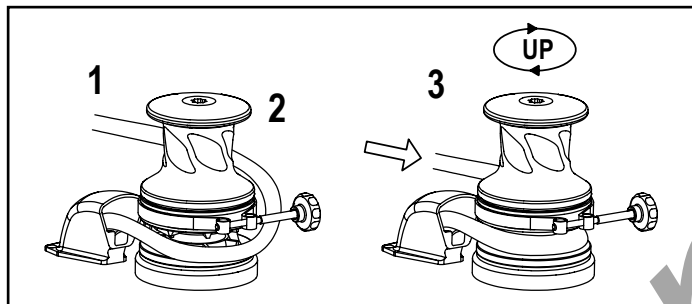
1. Grease the main shaft
2. Join the reducer to the upper part by aligning the motor far from the chain hole.
3. Screw washers and related nuts to the studs by fastening them appropriately.
4. Connect the cables coming from the battery to the electric motor by following the indications of the wiring diagram



⚠ ATTENTION! Always disconnect electrical power to the anchor windlass before carrying out any operation.

3.9 Chain insertion

In order to guarantee performances and reliability, it is recommended to use a calibrated chain of the measure corresponding to the gipsy supplied.



1. Insert the chain into the hole and fix to a safe point.
2. Wrap the chain in the gipsy.
3. Recover all the chain by using the motor, taking care that the chain enters into the gipsy well aligned.

⊘ Insert always an articulated joint between the chain and the anchor so that the chain itself does not turn into as spiral.

4 ELECTRICAL SYSTEM

Model	Motor Power (W)	Voltage (V)	Contactor (A)	Cable sizing according length of cable (positive + negative)			
				15-25 m	50-75 ft	> 25 m	> 75 ft
SX5	3000	24	125	50 mm ²	2 AWG	75 mm ²	000 AWG

4.1 Electrical cable section

In order to obtain the maximum performances from the anchor windlass and safeguard the electrical system, it is essential that the anchor windlass be wired with cables of sufficient section as suggested in the table.

4.2 Contactor (Control Box)

Place it in a dry place near the capstan.

4.3 Circuit breakers

The circuit breakers recommended by Lofrans have an intervention curve and not a simple plate value. The switches selected for each model guarantee the correct operation of the system.

4.4 Remote control electric panel board

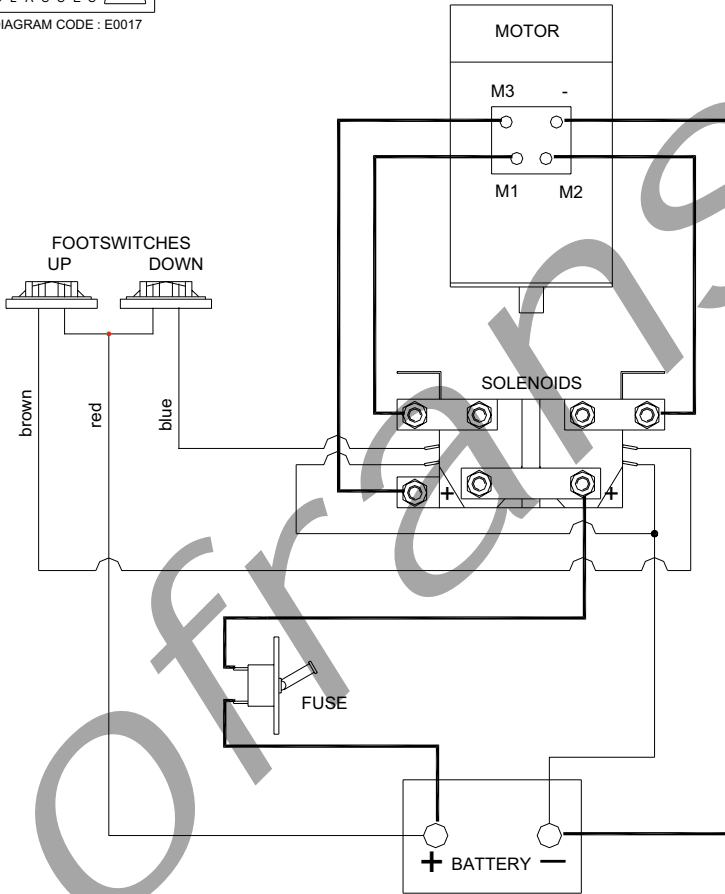
The remote control electric panel board must be mounted in a comfortable position (such as the deck, the rudder or the cockpit), so that the operator can see the capstan during the manoeuvre. Mount and seal the electric panel board so that the terminals remain in a dry place.

4.5 Wiring Diagram

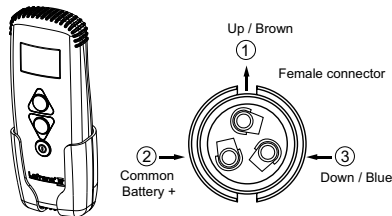


WIRING DIAGRAM CODE : E0017

WIRING DIAGRAM - 4 TERMINALS 3000W 24V ELECTRIC MOTOR



HAND HELD REMOTE CONTROL THETIS 1002



UK


5 USE OF THE ANCHOR WINDLASS

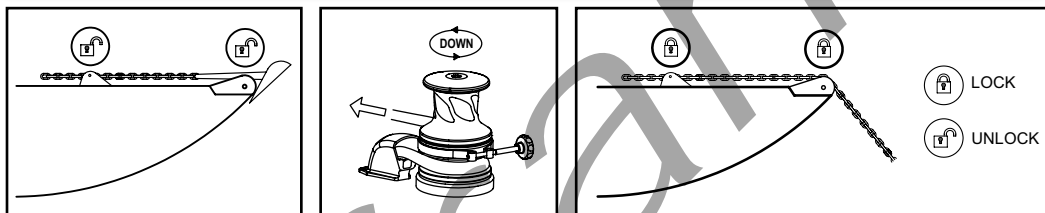
5.1 Lowering the anchor

Lowering of the anchor can be carried out through the electric control or by gravity:

5.1.1 Lowering the anchor electrically

1. Make sure that the clutch is tightened and the brake is disengaged. Disengage all chain fixing devices.
2. Activate the safety switch
3. Press the DOWN button from the control at your disposal. In this way, the lowering of the chain will be perfectly controllable and the unwinding of the chain regular.
4. Once the chain is lowered, deactivate the safety switch.
5. Engage the chain fixing devices.

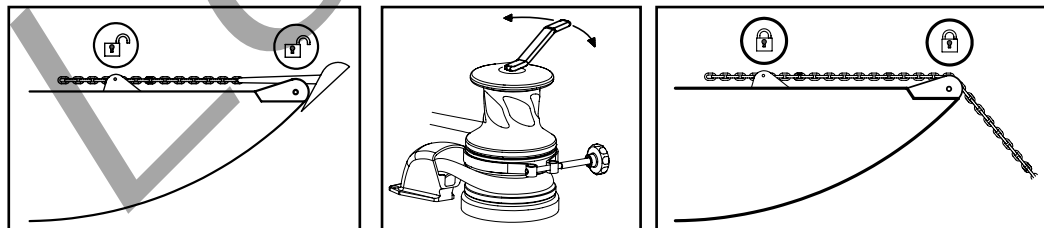
 During the use of the anchor windlass, do not change directly from one direction to the other but wait until the anchor windlass stops before manipulating the control into the opposite direction.




 Make sure the anchor windlass is not powered before carrying out manual interventions.

5.1.2 Lowering the anchor by gravity

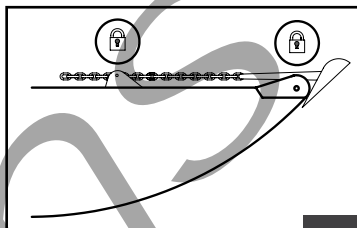
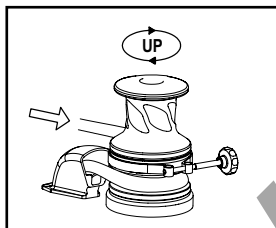
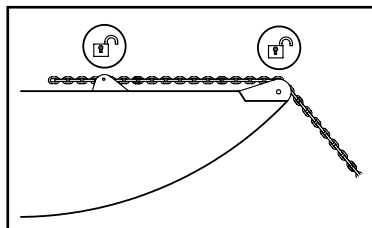
1. Make sure that the clutch is tightened and then disengage the chain stopper or safety stops. Disengage the brake.
2. Disengage the clutch gradually through the manoeuvre handle. Note: to adjust the descent speed of the chain act, through the handle, on the clutch. By turning it clockwise, the braking speed of the chain will increase (until complete stop), while by turning it anticlockwise, braking will be reduced.
3. Fix the chain (or the rope) to a strong point.




 By disengaging completely the clutch, the anchor will be lowered at high speed. Consequently, the fast passage of the chain into the hood and bow roller could damage them. It is recommended always to check the speed.

5.2 Weighing the anchor


1. Make sure that the hydraulic magnetic circuit breaker is activated.
2. Make sure that the clutch is well tightened and the **brake is disengaged**. **Take out the manoeuvre handle** from the drum or gipsy.
3. Disengage the chain stopper and safety stops.
4. Press the UP button from the control at your disposal until the anchor reaches its position inside the bow roller.
5. Deactivate the hydraulic magnetic circuit breaker.
6. Fix the chain with the chain stopper. In this way a potential damage of the anchor windlass will be avoided as well as unexpected chain releases.



-  Do not carry out the anchor recovery operation by relying only on the onboard batteries. Start the motor of the boat (or the generator) to obtain the necessary electromotive force.

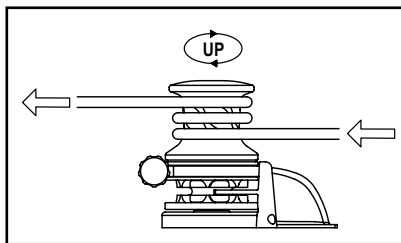
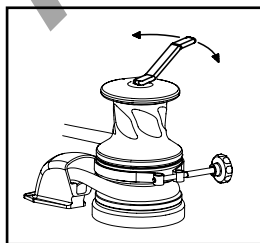
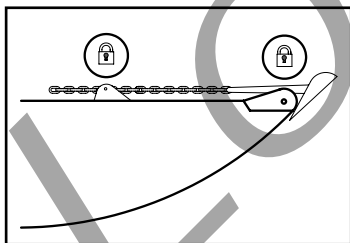
UK

To safeguard the anchor windlass, the hydraulic magnetic circuit breaker is sized so that it comes into action when the anchor windlass is subjected to higher loads than those for which it has been designed. Should it get released owing to an overload reactivate it again and wait some minutes before operating it; waiting for the operation after an overload is necessary to allow the circuits to cool and recover their functionalities.


-  The hydraulic magnetic circuit breaker does not protect against an excessive increase in the motor temperature due to a prolonged operation of the anchor windlass. Therefore, give the motor the necessary time to cool, to avoid possible damages to the motor thereof.

5.3 Use of the warping drum

The warping drum can be used regardless of the gipsy, to help the mooring manoeuvres.

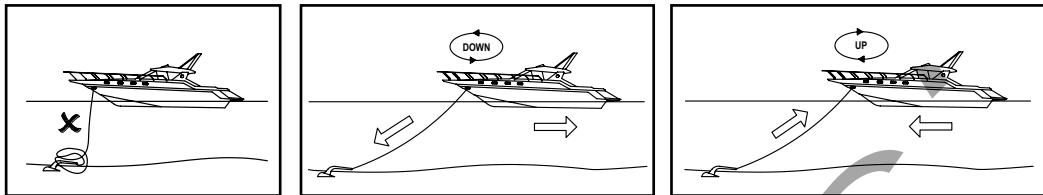


1. Tighten the brake and make sure that the anchor is appropriately blocked.
2. Insert the manoeuvre handle into the drum and disengage the clutch by turning it clockwise. This operation will make the drum independent of the gipsy.
3. Turn **clockwise** around the drum with three laps of rope.
4. By keeping the end of the rope, press the UP button and carry out the mooring manoeuvre.
5. Once the manoeuvre is ended, remove the rope from the drum and fasten it to a bollard.
6. Deactivate the safety switch.

-  Always remove the manoeuvre handle when not in use.

5.4 Notes for use

During mooring, the load on the chain can be very high due to current, wind and waves.



⊘ Mooring, do not use the anchor windlass as strong point but always use a chain stopper.

⊘ If during recovery, the anchor windlass should block, slip or turn into self-protection mode, check the cause before proceeding.

1. By paying out the chain, it is necessary to manoeuvre so that the chain is laid down on the seabed without heaping on itself.
2. To ease the recovery and not overloading the capstan, steer up in a way that the boat slowly moves on the vertical of the anchor.
3. When the anchor is in the vicinity of the bow roller, slow down the recovery to check at best the insertion of the anchor into the seat.

6 MAINTENANCE

	USE OF THE YACHT (MONTHS)			
	LESS THAN 2	FROM 2 UP TO 6	MORE THAN 6	CHARTER
EVERY 3 MONTHS	A - A		A - B	A - B
EVERY 6 MONTHS		A - B		
EVERY 12 MONTHS	A - B - C	C	C	C - D
EVERY 24 MONTHS		D	D	E
EVERY 36 MONTHS	D - E	E	E	

⊘ Follow strictly the maintenance programme. Not meeting the maintenance programme will cause forfeiture of the warranty.

⚠ Disconnect power to the anchor windlass before any maintenance.

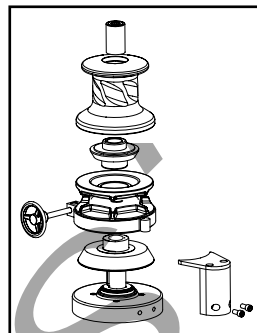
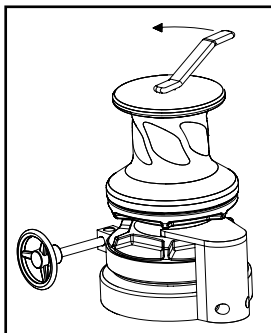
6.1 Maintenance programme

For obtaining the best performances and the utmost efficiency of the anchor windlass, it is necessary to follow strictly the maintenance programme indicated hereby.

- A.** Clean all external surfaces and hidden points with fresh water and soft cloth or non abrasive sponge to remove all salt layers. Do not use chlorine, bleach or acid solutions to clean the windlass as this will damage the INOX parts and the seals. Apply metal polish compound and coat all INOX parts to remove oxidation and renew the bright finish of the material.
- B.** Grease the rotating parts with yellow marine grease that is non conductive. Particularly, the main shaft threads and clutch cones. Check for evidences of corrosion and mechanical stresses. Apply anti seize grease to the clutch nut and main shaft thread (635494+636441)
- C.** Check the terminals of the electric motor. Test the voltage drop at the terminals.
- D.** Replace all gaskets.
- E.** Remove the anchor windlass from the deck to clean the salt under the base and seal again.

6.2 Gipsy maintenance/replacement

1. By turning anticlockwise, remove the hand-wheel of the gipsy through the manoeuvre handle.
2. Slip off from the shaft the upper clutch cone, the gipsy, and the lower clutch cone.
3. Wash with running water. **DO NOT USE WATER UNDER PRESSURE.**
4. Check that there is no evidence of corrosion or mechanical stresses.
5. Reassemble by proceeding in the reverse order, remembering to lubricate threads and all moving parts with grease.



7 TROUBLESHOOTING

Problem	Possible causes	Solution
1. The anchor windlass does not work when a control is operated	<ol style="list-style-type: none"> 1.1 Protection switch in OFF position 1.2 Lack of voltage in the system 1.3 Failure of the control box 1.4 Failure of the control 1.5 Failure of the electric motor 	<ol style="list-style-type: none"> 1.1 Check the protection switch and set it in the ON position 1.2 Check the charge status of the battery, check connections 1.3 Check and possibly replace the control box 1.4 Check and possibly replace the control 1.5 Measure the electric motor voltage; if it is OK, check the brushes and clean them. If it does not work, replace the electric motor
2. The chain jams frequently	<ol style="list-style-type: none"> 2.1 The chain locker is not deep enough with respect to the quantity of chain chosen 2.2 The chain is not suitable for the gipsy 2.3 The chain is not calibrated 	<ol style="list-style-type: none"> 2.1 Position the anchor windlass in the deepest point of the chain locker or reduce the quantity of chain 2.2 Change the gipsy 2.3 Check the chain: if it does not meet the tolerances, it must be replaced
3. The anchor windlass turns slowly	<ol style="list-style-type: none"> 3.1 Unsuitable cable sections 3.2 Deck floors not parallel 3.3 Bad electrical connections 3.4 Dirty brushes 3.5 Water infiltrations in the electric motor 	<ol style="list-style-type: none"> 3.1 Increase cable section 3.2 Make floors parallel by interposing thicknesses 3.3 Check connections 3.4 Clean brushes 3.5 Replace the electric motor
4. The electric engine runs but the shaft does not rotate either Up or Down	<ol style="list-style-type: none"> 4.1 Heavy wear or breakage of teeth of the crown / worm screw. 4.2 Breakage of the engine spindle. 	<ol style="list-style-type: none"> 4.1 (SERVICE) Uninstall the winch and replace the broken parts. Check out carefully that pieces or splinters of broken parts did not enter into the oil circuit and have ruined other mechanical parts. (*) 4.2 (SERVICE) Replacing of the engine. Care must be taken that the broken part did not remain in the hole of the worm screw. (*) <p>(*) Take advantage of this opportunity to replace any other worn parts, especially gaskets, screws, tabs, seeger, and oil.</p>

UK

Problem	Possible causes	Solution
<p>5. The electric engine runs, the shaft rotates Up, but does not rotate Down</p>	<p>5.1 The chain locker is tangled; therefore, the emergency mechanism becomes operative. 5.2 The chain is of poor quality with burrs and zinc deposits that do not allow the free flow of the links; therefore, the emergency mechanism becomes operative.</p> <p>5.3 The chain was placed in the locker in block and the links are stuck with each other; therefore, the emergency mechanism becomes operative.</p> <p>5.4 Wear of the emergency mechanism of the spring control.</p> <p>5.5 The chain stripper interferes with the gypsy: it is possible to weigh the operation, while to lower, the emergency mechanism becomes operative.</p>	<p>5.1 Check out that immediately after the anchor there is a joint that allows the chain to unfold properly when weighed.</p> <p>5.2 Remove the chain from the locker and inspect it link by link. Intervene with the appropriate tools to make it as loose as possible and free of obstructions.</p> <p>5.3 Lower manually all the chain in a sea bed deep enough to enable it to unfold properly. Retrieve it with the winch.</p> <p>5.4 A (SERVICE) Uninstall the winch from the boat and disassemble it into its parts by replacing the spring. Take advantage of this opportunity to replace any other worn parts, gaskets, screws, tabs, seeger, and oil. B (SERVICE) It is possible to block the EMERGENCY MECHANISM so that the gears are always engaged both in UP and in Down. This operation must be authorized by the shipowner. The solution rules out completely the possibility of carrying out the emergency operation.</p> <p>5.5 Restore the condition of the chain stripper by repositioning properly in the gypsy centreline. If it is deformed. It must be replaced.</p>
<p>6. The electric engine runs but it cannot be bell warped.</p>	<p>6.1 The bell warp is being used wrongly; therefore, the emergency mechanism becomes operative</p>	<p>6.1 To carry out the warping operation the main shaft must run in the same rotation direction of the winch gypsy when it weighs the chain.</p>
<p>7. The winch cannot be weighed: the electric engine runs, the shaft runs, but the gypsy is still although the brake belt is loose.</p>	<p>7.1 The gypsy is not closed on the clutch cones and slips under the load effect, or for some reason the closing wheel is at end stroke. Check out all pieces in sequence.</p> <p>7.2 The clutch cones or the gypsy cones are deformed and the clutch hubs are in contact and prevent closure.</p>	<p>7.1 Check out clutch tightening. If necessary, measure the parts and check out possible deformations. It is possible to add some thickness to stem the problem. Then replace the damaged parts.</p> <p>7.2 Replace the clutch and/or the gypsy</p>
<p>8. The shaft does not run well, is not aligned, and so is the gypsy and/or the bell.</p>	<p>8.1 The shaft bent because the winch was subjected to an excessive load.</p>	<p>8.1 Check out that the procedures of use fall within the specifications of the winch. (SERVICE) Uninstall the winch and replace the shaft. Take this opportunity to replace worn parts, gaskets, seeger, tabs and oil.</p>
<p>9. Loss of oil between the engine and the gearbox body</p>	<p>9.1 The coupling of the engine is loose and causes the worm screw into an irregular rotation, leading to loss of oil from the gasket.</p>	<p>9.2 (SERVICE) Find the reasons why the screws or nuts have become loose. Uninstall the engine and check out the status of the spindle and the hole of the worm screw. If an oval form of the cylindrical part of the screw is observed (outer hole and diameter) uninstall the winch and repair the damaged parts on the bench. Check out if the oil has entered into the electrical engine. Take this opportunity to replace all gaskets, tabs, seeger, screws, oil, and any worn parts.</p>

Problem	Possible causes	Solution
10. On installation, it is found that the shaft and the studs are short for a correct coupling with the gearbox.	10.1 The request referred to the deck thickness was wrong.	10.1 If the key shaft works in the gearbox along all its length, the fixing studs can be adapted. Otherwise, a longer shaft must be requested.
11. The winch runs slowly and at times jumps the circuit breaker.	11.1 Section of cables not suitable. 11.2 Poor electrical connections. 11.3 Dirty brushes. 11.4 Water leaks in the electrical engine. 11.5 There is no parallelism between upper deck and below deck. 11.6 The gearbox has lost oil. 11.7 The engine strains in one or both directions. 11.8 The winch works only in one direction.	11.1 Increase the cable section 11.2 Check out the connections 11.3 Clean the brushes 11.4 Replace the electrical engine 11.5 Work surfaces and/or add shims to restore parallelism. 11.6 (SERVICE) Uninstall the gearbox and check out its condition. Replace damaged parts after discovering the causes of the leak. Also, replace gaskets and screws. Check out also the engine condition, which may have been damaged during the malfunction. 11.7 (SERVICE) Check out appropriately all connections of the power cables. If they are alright, uninstall the engine (in some cases it is convenient to disassemble also the gearbox). Check out and possibly replace the brushes. 11.8 Check out on the control box that between B2-C and B3-C contacts there are 12/24V when the respective buttons are pressed. If this should happen and one of the relays does not work, replace the control box.

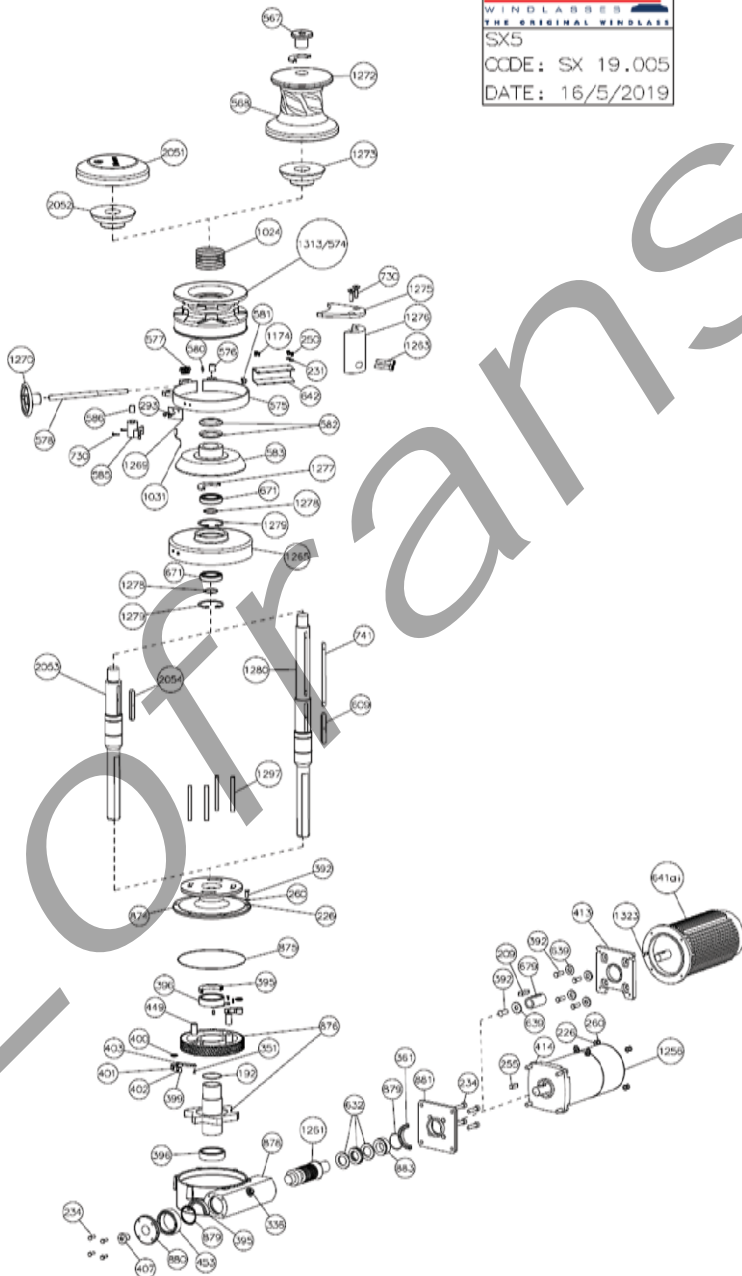
8 TECHNICAL DATA

Motor Power	3000W	4000W	11cc
Vessel Length Heavy Duty (ft)		85-95	
Vessel Length Light Duty (ft)		90-100	
Power Supply	24V	230/400V	N/A
Maximum linear Load/Pull (lb)	2800 / 6173	3000 / 6613	3000 / 6600
Max Lift Working Load (lb)	760 / 1676	815 / 1797	815 / 1793
Amps Work Load (A)	210	N/A	N/A
Max Line Speed (ft/min.)	33 / 108	20 / 66	20 / 60
Line Speed (ft/min.)	17 / 56	20 / 66	20 / 60
Net weight with Drum (lb)	100 / 220	105 / 231	105 / 231

Gipsy	12 mm			13 DIN 764	14 mm	1/2"HT	1/2"BBB
Chain supported	12mm	13	7/16"	13	14 mm	1/2"	1/2"
	ISO	DIN 766	G4	DIN 764	ISO	G4	BBB

9 SPARE PARTS

Lofrans®
 WINDLASSES
 THE ORIGINAL WINDLASS
 SX5
 CCDE: SX 19.005
 DATE: 16/5/2019

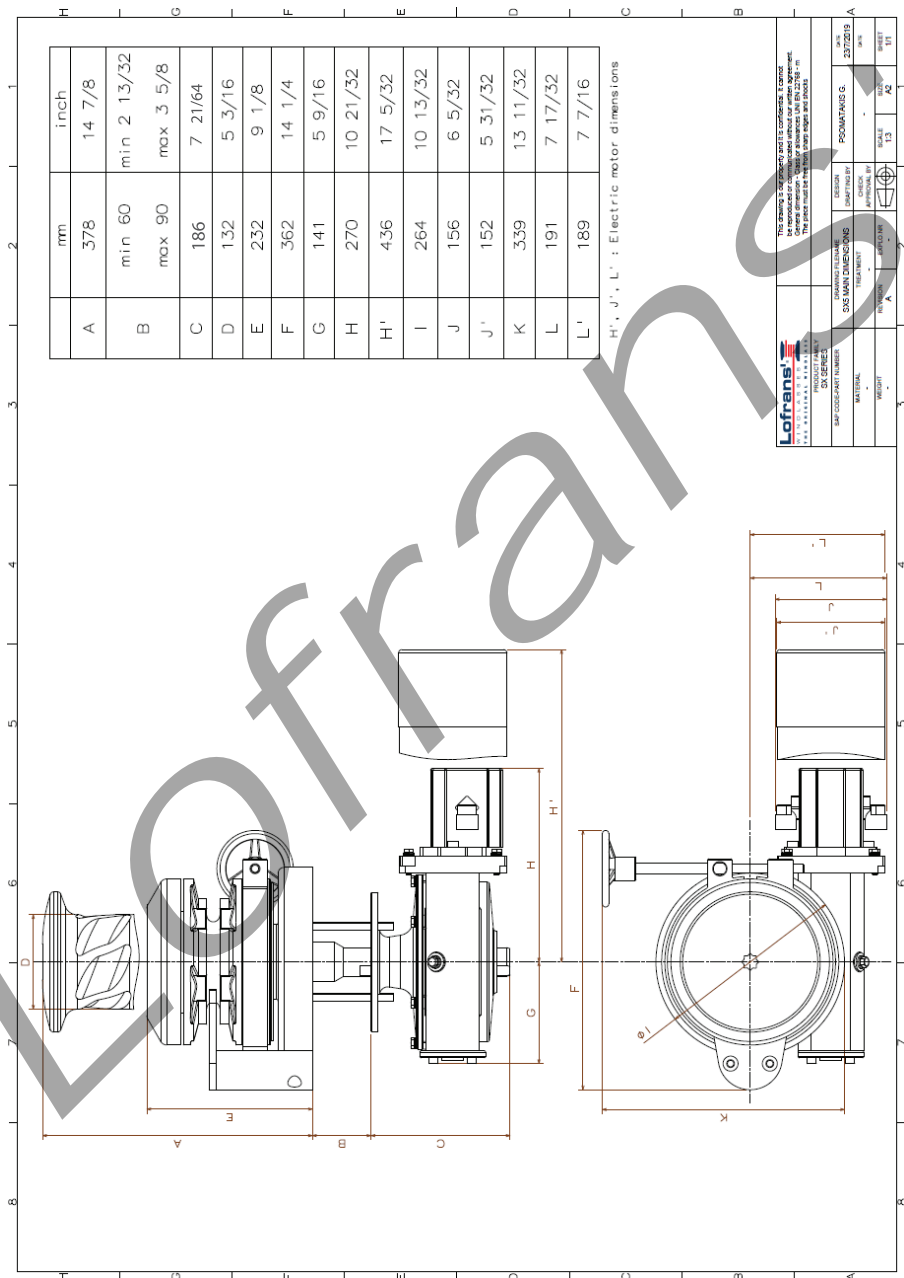


SX5		
Item	Description	Q.ty
217	Hex hd screw M8x20	6
226	Washer for screw M8	14
231	Washer for screw M5	2
324	Hd cap screw - M8x20	10
250	Hd cap screw - M5x8	3
255	Key 6x6x25	1
260	Spring washer for screw M8	8
272	Handle	1
293	Hd cap screw - M5x16	2
336	Oil cap	1
361	Seal - 40x50x5	1
395	Seal - 50x70x10	2
396	Bearing - 16010	2
400	Circlip - 15 Din 471	4
407	Sightglass	1
414	Hex hd screw - M8x30	4
449	Pivot	2
453	Bearing - 6206	1
567	Clutch NuT	1
568	Seal - 55x72x10	1
575	Band brake	1
576	Pivot	1
577	Spring	1
578	Brake Pivot Wheel	1
581	Safety nut - M12	1
582	Dished plane spring	2
583	Clutch cone - inner	1
585	Brake pivot support	1
586	Brake pivot	1
609	Key 12x8x60	1
642	Brake cover	1
671	Bearing 6011	2
730	Conic screw M10x30	4
741	Key 12x8x150	1
746	Stud M8x40	4
874	Gearcase - upper	1
875	O Ring seal -4800	1

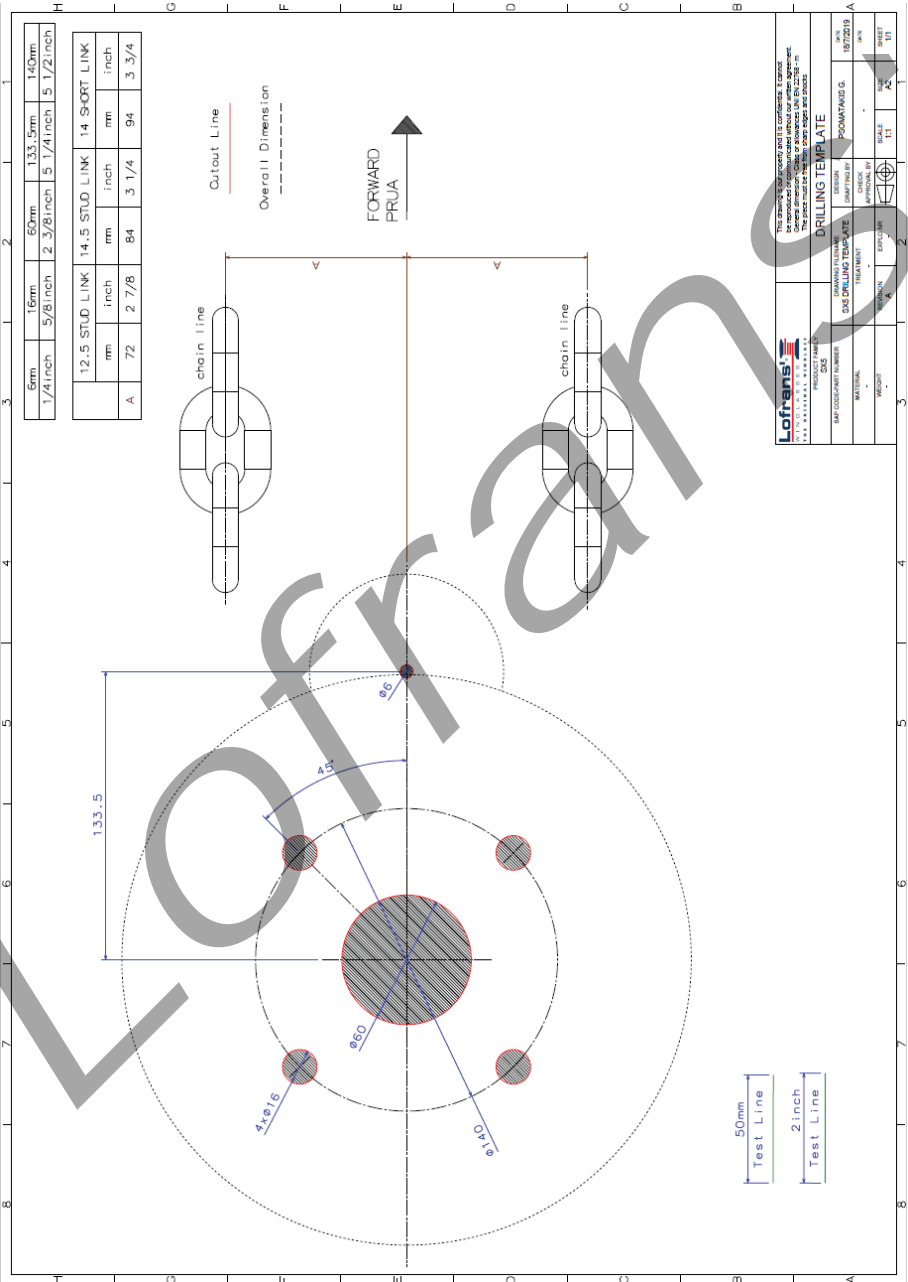
SX5		
Item	Description	Q.ty
877	Racket	1
878	Gearcase - lower	1
879	O ring seal -159	2
880	Oil level flange	1
881	Coupling flange	1
883	Spacer	1
884	Handle	1
1024	Spring	1
1031	Sensor	1
1256	Electric Motor 3000W 24V	1
1260	Wormwheel	1
1261	Worm	1
1262	Motor flange for B14	1
1263	Hd cap screw M12x30	2
1264	Spacer	1
1265	Base	1
1269	Support sensor	1
1270	Hand-wheel	1
1272	Drum	1
1273	Clutch cone - outer	1
1275	Stripper	1
1276	Stripper base	1
1277	Seal - 55x90x10	1
1278	Spiral reating ring 55mm	2
1279	Circlip - 90 Din 472	2
1280	Main shaft	1
1313	Gipsy chain 12 iso - 13 Din766 - 1/2" Din766	1
1323	Key 6x7x40	1
574d	Gipsy chain 14 iso	1
574g	Gipsy chain 12.5 iso	1
632b	Bearing - 51108	1
641ai	A.C. Electric motor 4KW B14	1
2051	Gypsy cap sx5 L.P	1
2052	Upper cone clutch SX5 L.P	1
2053	Main shaft SX5 L.P	1
2054	Key SX5 L.P	1

UK

10 OVERALL DIMENSIONS



11 DRILLING TEMPLATE



UK

12 WARRANTY CONDITIONS

Lofrans guarantees that in a normal use and by meeting the maintenance programmes, the anchor windlass is covered by a warranty for a period of **3 years** from the date of purchase by the ultimate user, subject to the conditions, limitations, and exceptions listed hereunder. Any product that proves to be defective in a normal use during this period will be repaired or replaced at the choice of Lofrans.

12.1 Conditions and limits

- Lofrans liability will be limited to the repair or replacement of all parts of the product that show material or processing defects.
- Lofrans is not liable for the wrong choice of the anchor windlass by the purchaser.
- Lofrans will not be liable in any whatsoever manner for failures, or any consequent damage deriving from:
 - use of the anchor windlass in an application for which it was not designed or envisaged;
 - corrosion, degradation by UV rays and wear;
 - non-observance of the maintenance plan;
 - wrong or unsuitable installation of the product;
 - any modification or alteration of the product;
 - conditions of use beyond the specifications and the performances of the product:
 - Except for different directives given directly by Lofrans, any product subject to a warranty request must be returned to Lofrans, which will analyse the problem.
 - The warranty does not cover the accessory costs met for interventions, removal, transport, and installation of the product;
 - Maintenance carried out by persons not authorised by Lofrans will invalidate this warranty;
 - The Lofrans products are intended to be used only in a marine environment. Lofrans is not liable should these products be used differently.

12.2 Exceptions

The cover under warranty of the following components is limited to a period of one year from the date of purchase by the ultimate user:

- Electric motors and related electric equipment
- Electronic controls
- Hydraulic pumps, valves, and actuators
- Gaskets and seals
- Products used on charter boats.

12.3 Liability

The liability of Lofrans on this warranty is intended dependant on meeting the regulations and laws in force. Lofrans is not liable for any other kind, such as: - Any loss of turnover, advances, or direct or indirect profits, or any other financial loss;

- Damages, costs or expenses payable to third parties;
- Damages to yachts or equipment;
- Death or personal injuries (unless caused by negligence of Lofrans).

Certain States and Countries do not allow the exclusion or limitation of incidental or consequential damages, therefore the aforementioned limitations or exclusions might not be applicable.

12.4 Procedure

Every request for intervention under warranty will be made promptly and in writing by the ultimate user to the local Lofrans assistance centre.

12.5 Clause of termination

If any whatsoever clause of this warranty will be invalidated by a Judge or other competent authority, the validity of the remaining clauses of this warranty and the rest of the clause in question will not be affected.

12.6 Compliance

This warranty is governed by the laws and in compliance with the Italian Laws or the State or Country in which the ultimate user is domiciled at the time of purchase of the product.

Lotrans.

Lofrans![®] 
WINDLASSES
THE ORIGINAL WINDLASS

Via Philips, 5 - 20052 Monza (MB) (Italy)
www.lofrans.com - e-mail: contact@lofrans.com