

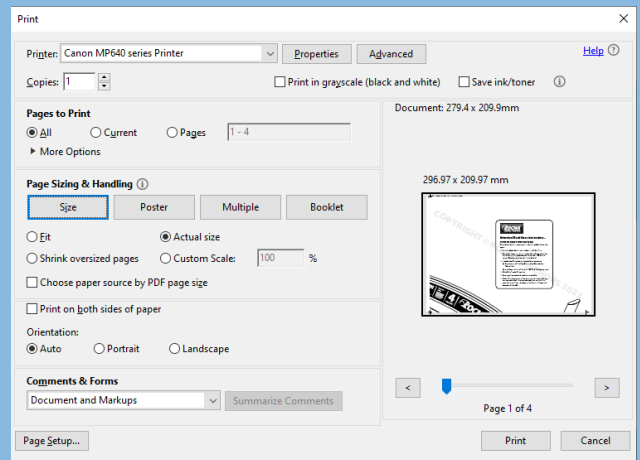


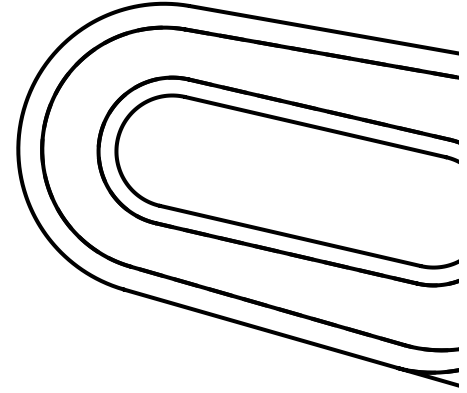
Attention! Read these instructions...

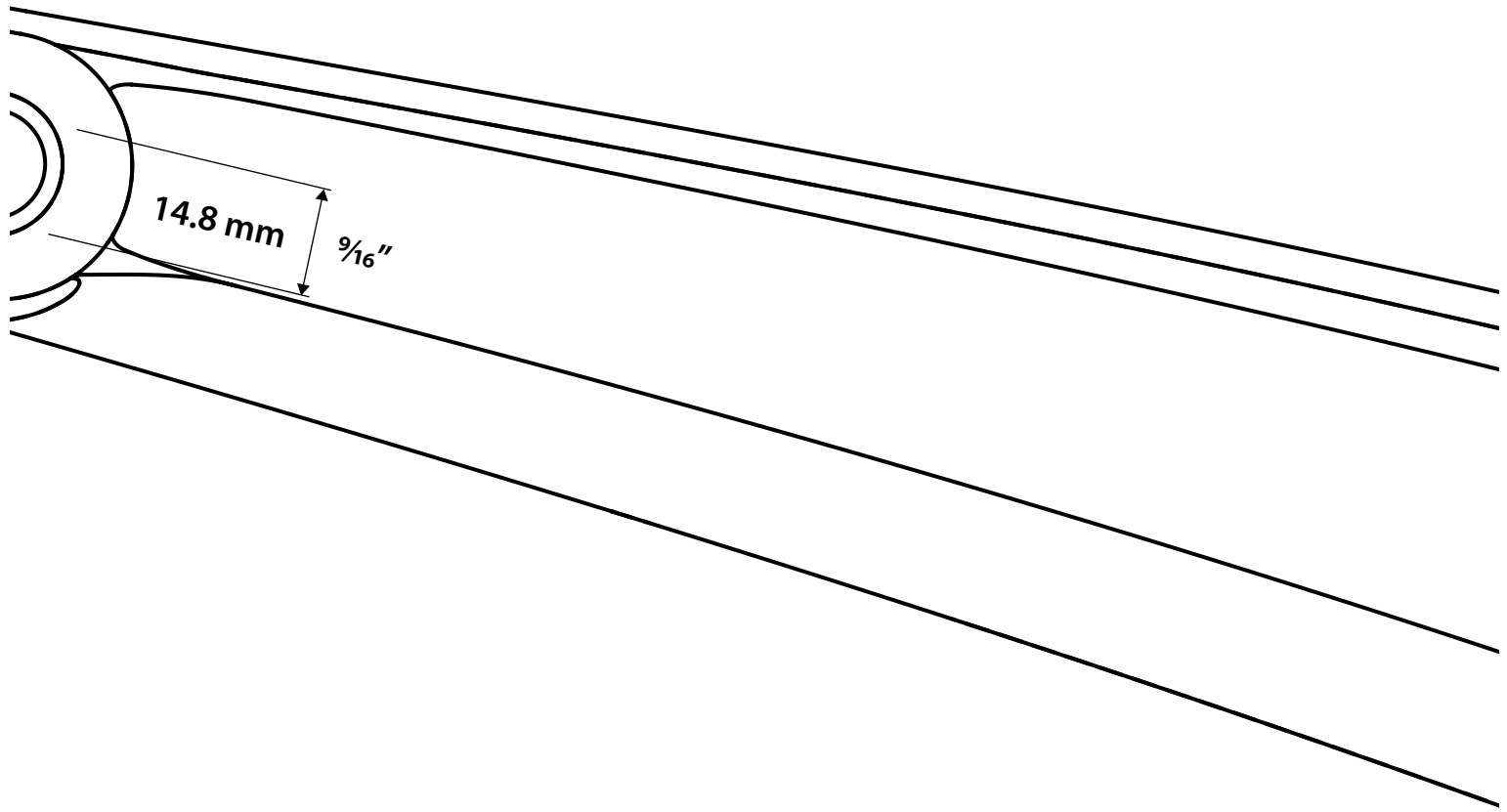
HOW TO PRINT THIS PATTERN

Please follow these instructions to print. You will need A4 or letter size paper:

- ▶ From the Adobe Acrobat main window, go to **File > Print...**
- ▶ Select the printer you want to use, then click on **Properties**. In the new dialog window, check the paper format (A4 or US letter) is correct. Close the properties dialog when finished.
- ▶ In the Acrobat Print window, adjust the following settings:
 - Very important: Under **Page Sizing**, select **Size**, and then **“Actual size”**,
 - or set **Page scaling** to **“None”** or **“100%”** (old Acrobat versions).
- ▶ Select **“Auto”** under **Orientation**.
- ▶ Ensure you have enough sheets of paper available.
- ▶ Click on **Print**. Your printer will output a series of sheets which you can reassemble. Each sheet is numbered by (row, column) in its upper left corner. Line up the edge-marks to form a 1:1 pattern of the anchor side profile.







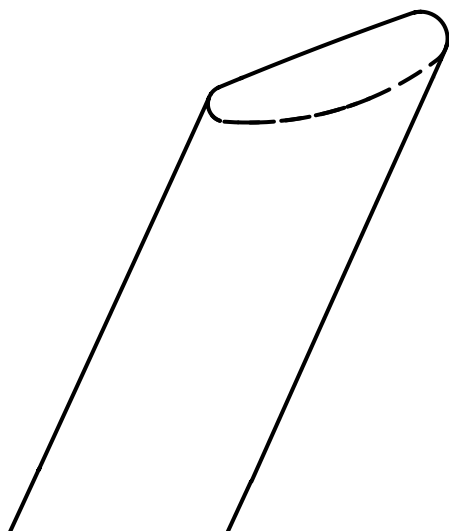
ROCNA
ANCHORS // ROCK SOLID

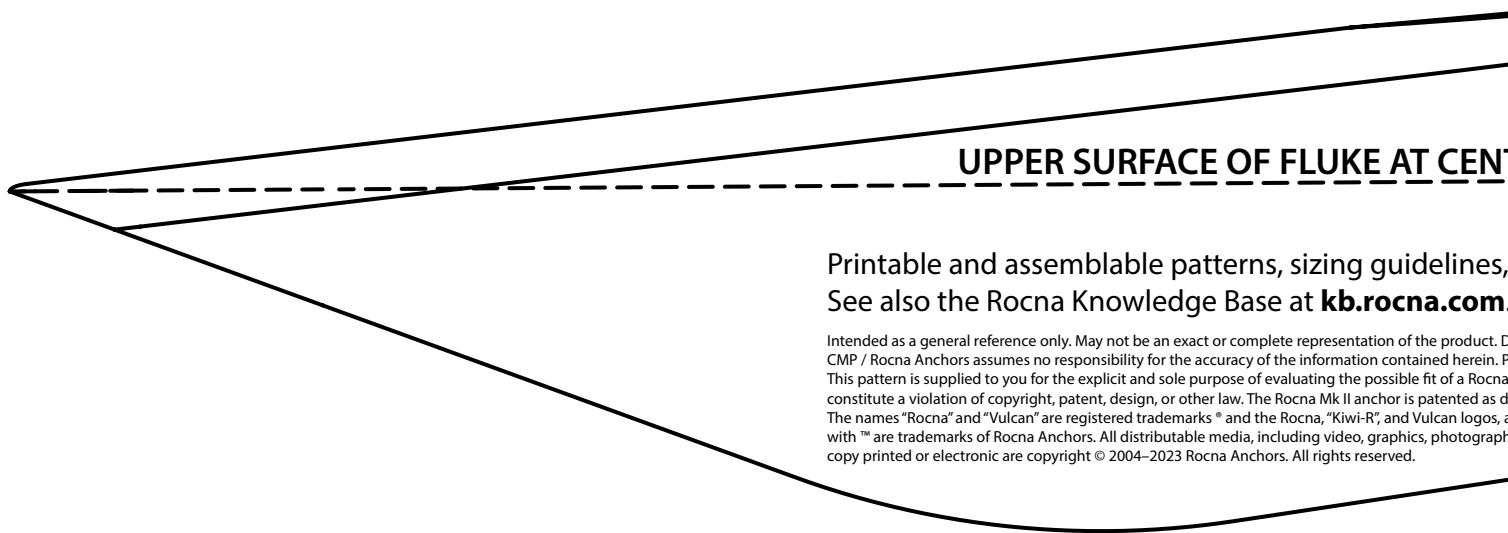
Peter Smith
Designed by Peter Smith

Rocna.com
CMP1

Covered by one or more
of patents: US8950352,
NZ602454, NZ620976,
CA2790598, CA2922499,
GB2505931, GB2518531
*Weights may vary.

15
15 kg / 33 lb *

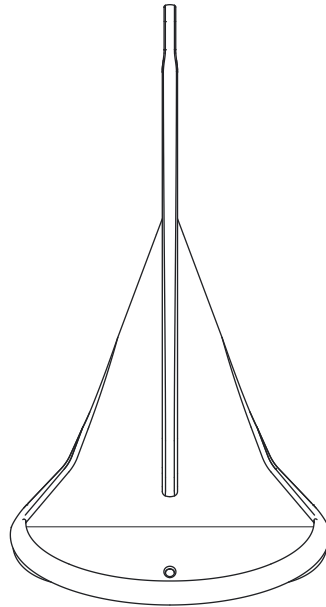




UPPER SURFACE OF FLUKE AT CEN

Printable and assemblable patterns, sizing guidelines,
See also the Rocna Knowledge Base at kb.rocna.com

Intended as a general reference only. May not be an exact or complete representation of the product. E
CMP / Rocna Anchors assumes no responsibility for the accuracy of the information contained herein. F
This pattern is supplied to you for the explicit and sole purpose of evaluating the possible fit of a Rocna
constitute a violation of copyright, patent, design, or other law. The Rocna Mk II anchor is patented as d
The names "Rocna" and "Vulcan" are registered trademarks ® and the Rocna, "Kiwi-R", and Vulcan logos, e
with ™ are trademarks of Rocna Anchors. All distributable media, including video, graphics, photograph
copy printed or electronic are copyright © 2004–2023 Rocna Anchors. All rights reserved.

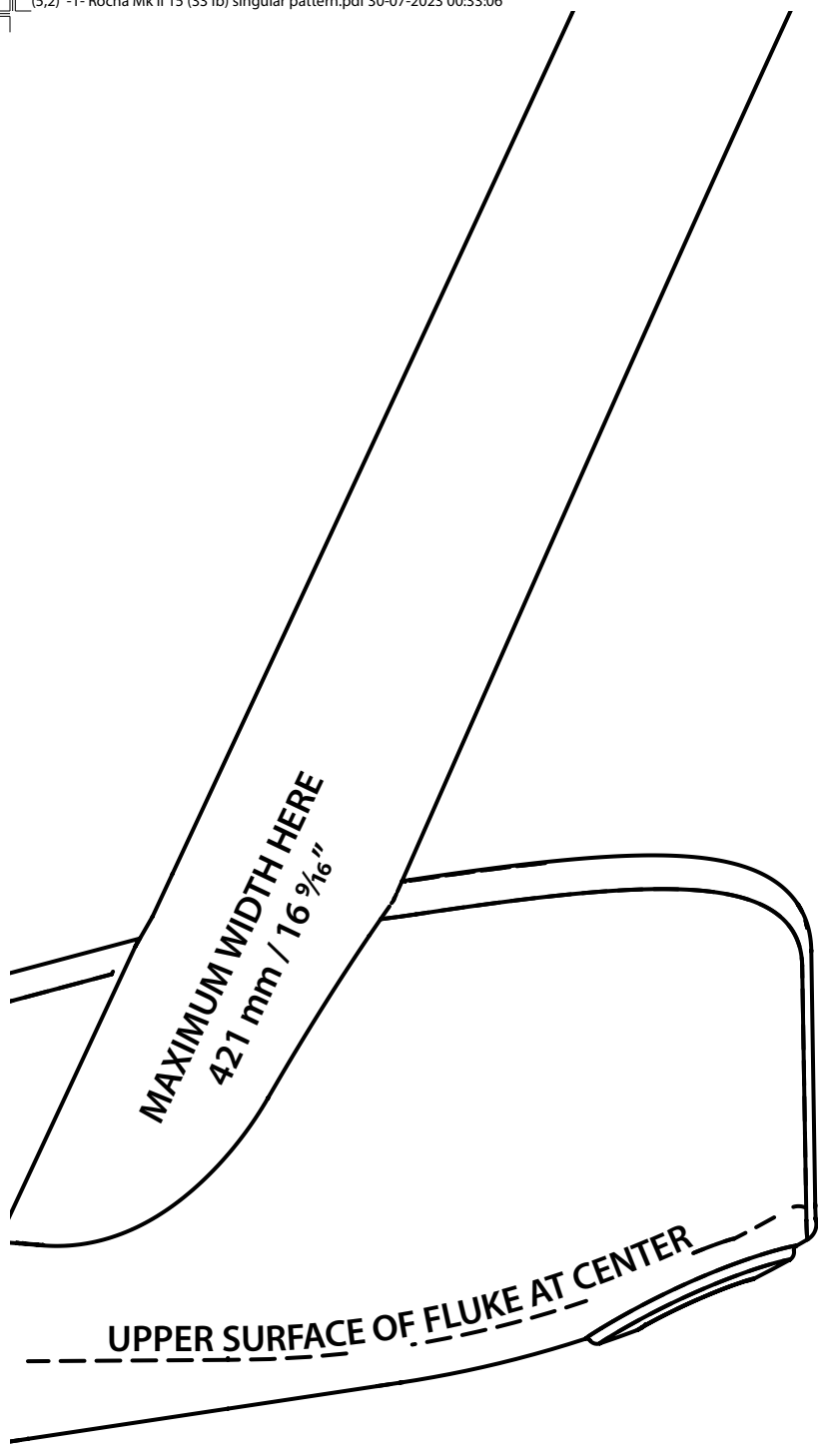


TOP VIEW

TER

, and more resources are available at **Rocna.com**.
i. For further assistance e-mail **support@rocna.com**.

Dimensions may vary. Contents based on the latest information available at the time of publication.
Product specifications are subject to change without notice.
a anchor on a vessel. Any other use of this document may
described on the label above.
and other terms marked
hy, and all



MAXIMUM WIDTH HERE
421 mm / 16 ⁹/₁₆ "

UPPER SURFACE OF FLUKE AT CENTER