

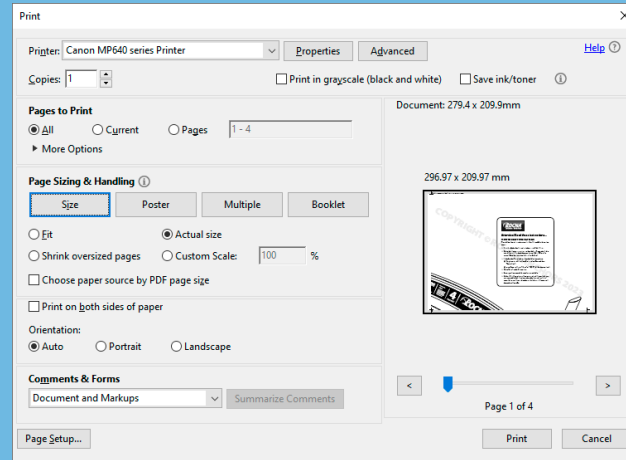


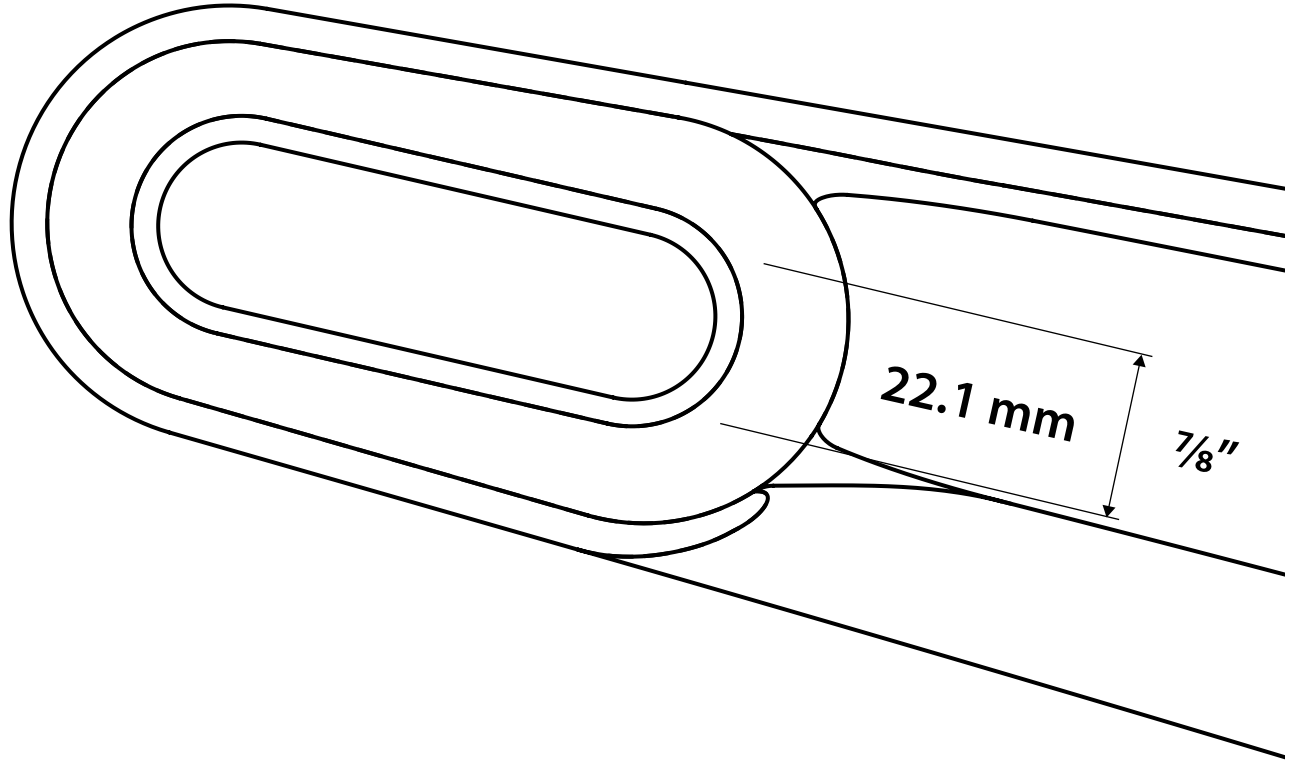
## Attention! Read these instructions...

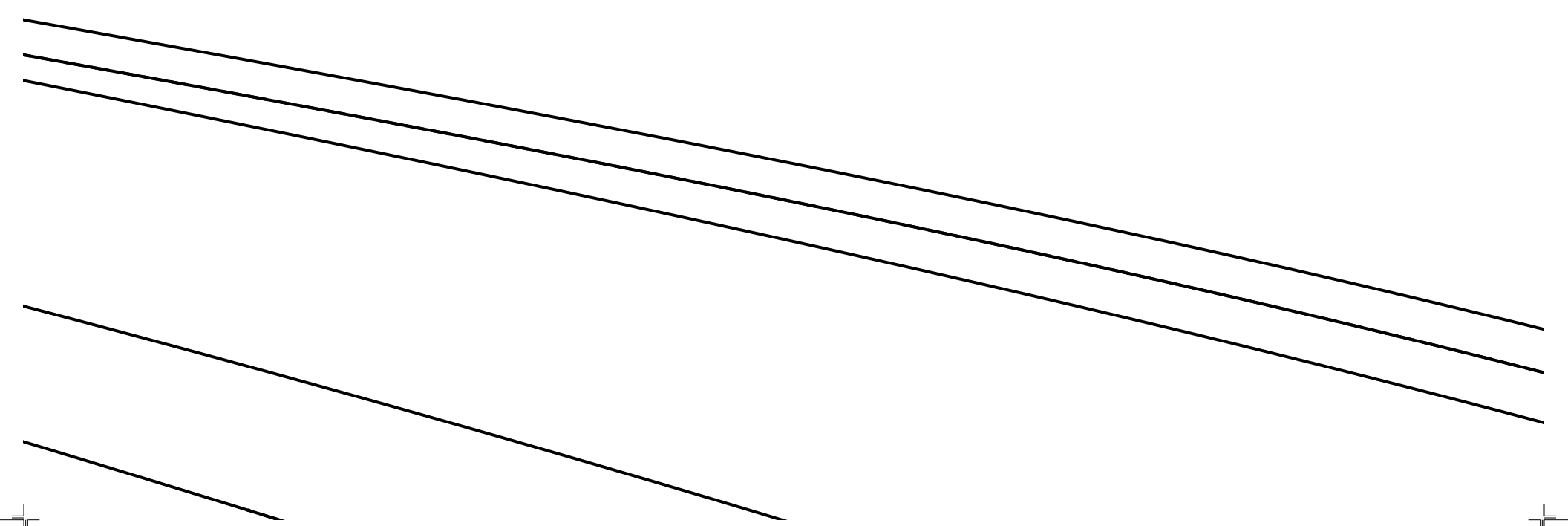
### HOW TO PRINT THIS PATTERN

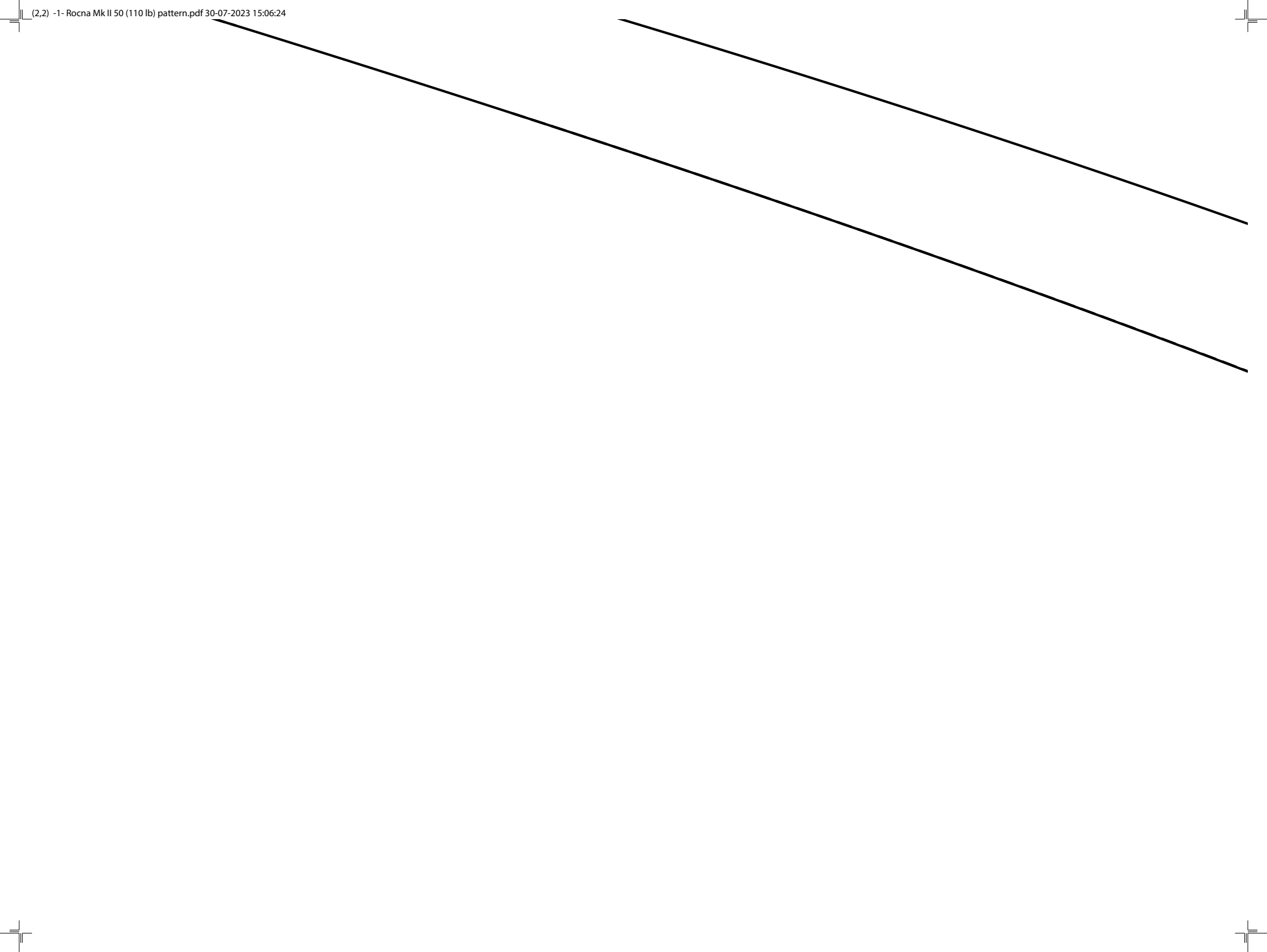
Please follow these instructions to print. You will need A4 or letter size paper:

- ▶ From the Adobe Acrobat main window, go to **File > Print...**
- ▶ Select the printer you want to use, then click on **Properties**. In the new dialog window, check the paper format (A4 or US letter) is correct. Close the properties dialog when finished.
- ▶ In the Acrobat Print window, adjust the following settings:
  - Very important: Under **Page Sizing**, select **Size**, and then **"Actual size"**,
  - or set **Page scaling** to **"None"** or **"100%"** (old Acrobat versions).
- ▶ Select **"Auto"** under **Orientation**.
- ▶ Ensure you have enough sheets of paper available.
- ▶ Click on **Print**. Your printer will output a series of sheets which you can reassemble. Each sheet is numbered by (row, column) in its upper left corner. Line up the edge-marks to form a 1:1 pattern of the anchor side profile.









**ROCNA**<sup>®</sup>  
ANCHORS // ROCK SOLID



Designed by Peter Smith

Rocna.com

**CMP)**

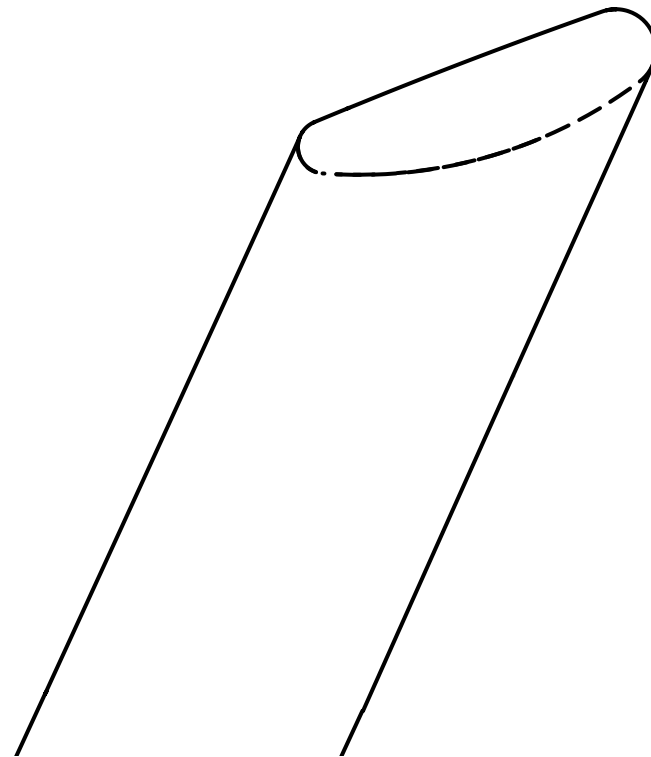
Covered by one or more  
of patents: US8950352,  
NZ602454, NZ620976,  
CA2790598, CA2922499,  
GB2505931, GB2518531

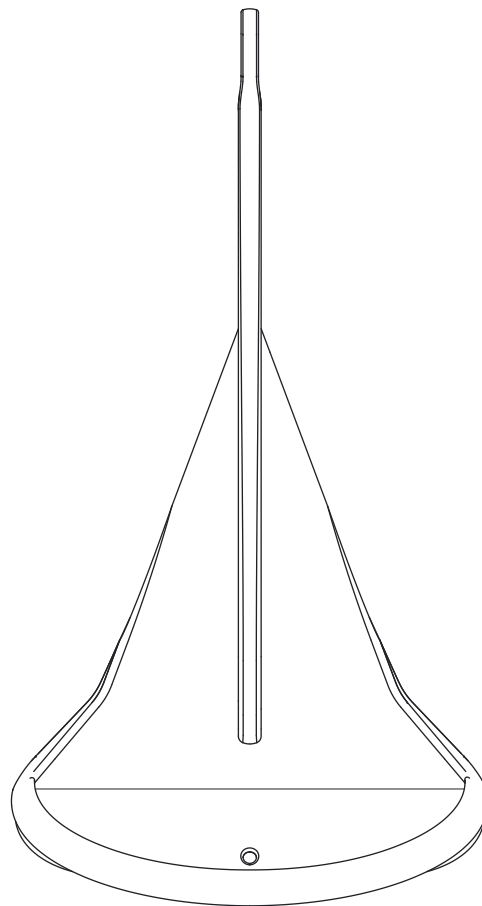
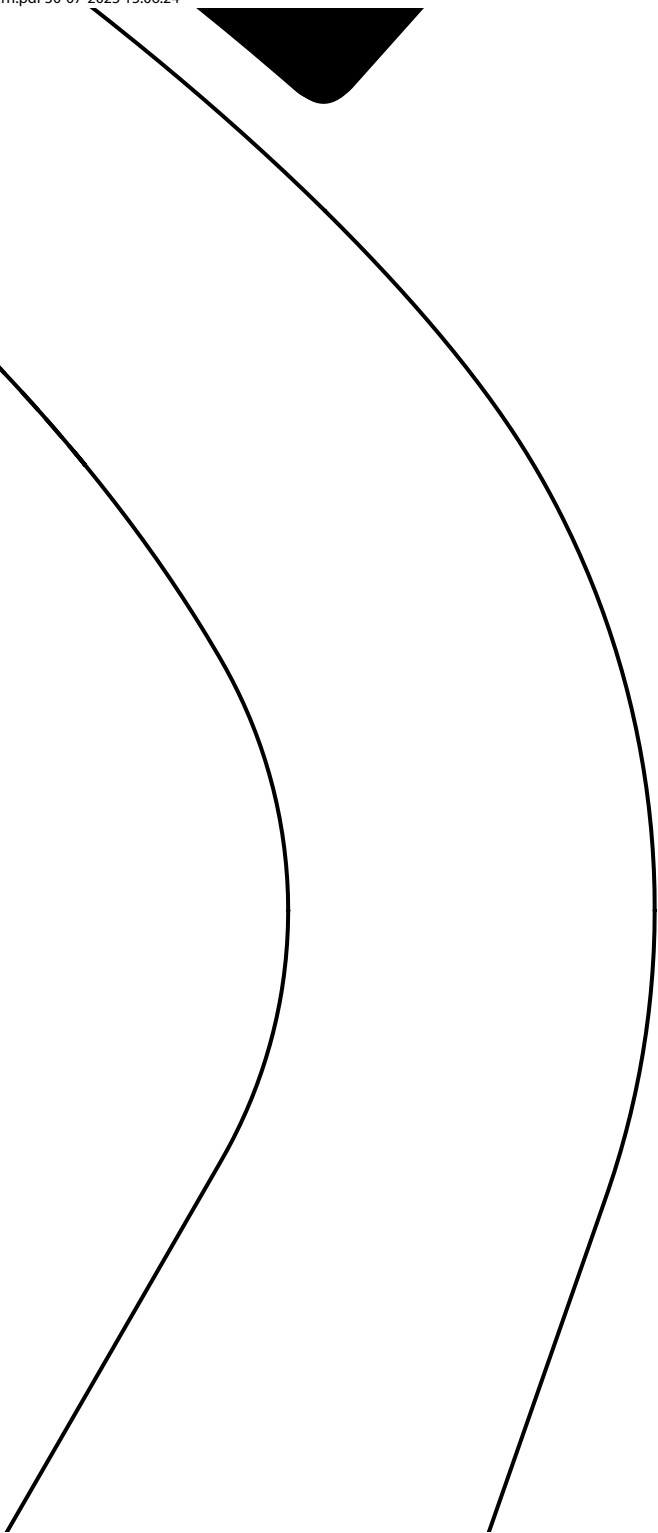
\*Weights may vary.

**50**

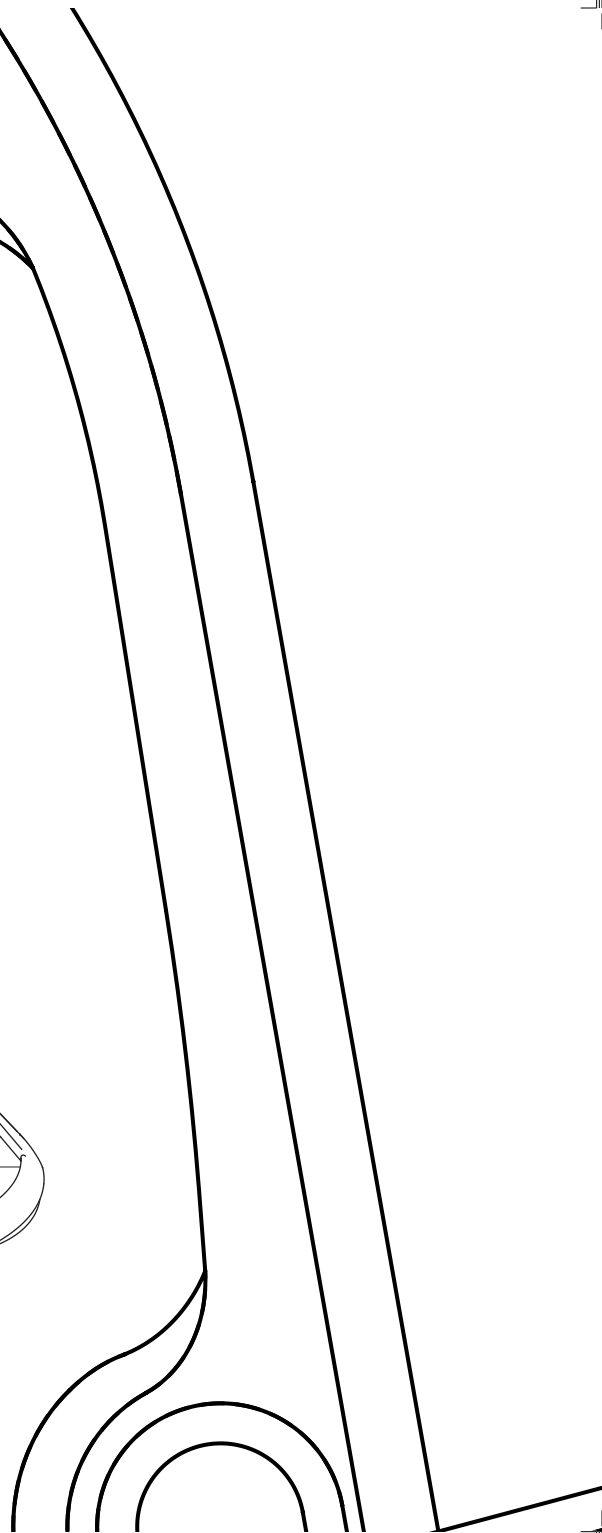
50 kg / 110 lb \*







**TOP VIEW**

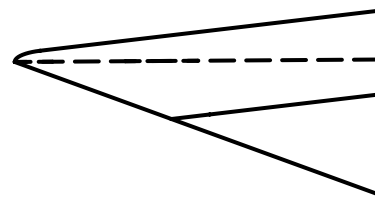






UNIFORM WIDTH HERE  
mm / 24  $\frac{3}{4}$ "

The image shows a technical drawing of a curved structural component, likely a part of a boat's hull or deck. The drawing consists of two main parallel lines that curve downwards and then meet at a rounded end. A dimension line is drawn across the width of the component, with the text 'UNIFORM WIDTH HERE' and 'mm / 24 3/4"' written below it. The drawing is oriented vertically on the page.



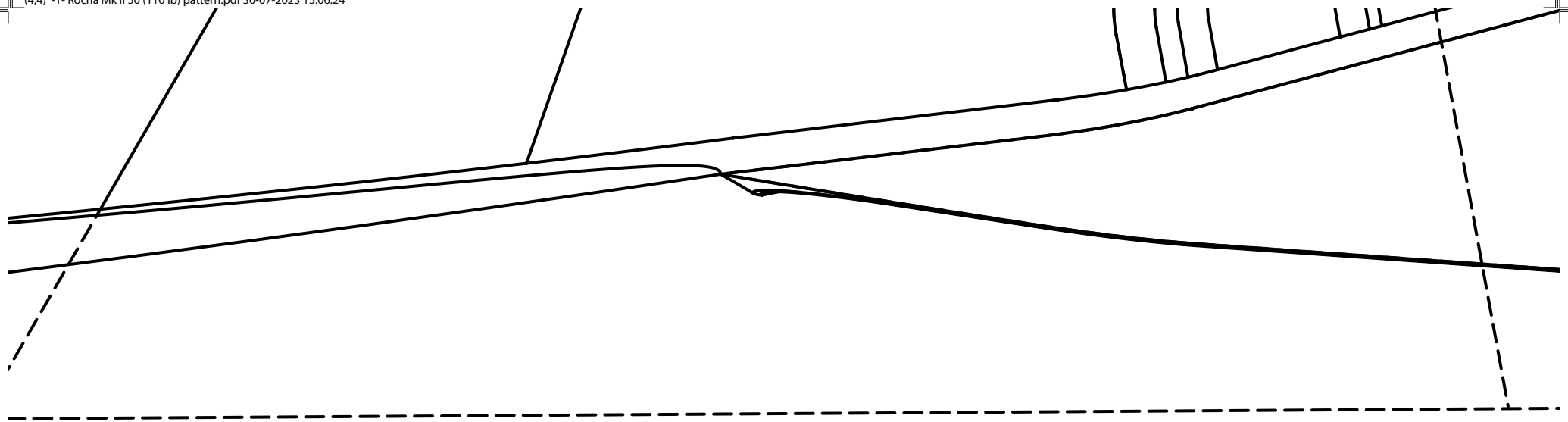


## UPPER SURFACE OF FLUKE AT CENTER

Printable and assemblable patterns, sizing guidelines, and more  
See also the Rocna Knowledge Base at **kb.rocna.com**. For further

Intended as a general reference only. May not be an exact or complete representation of the product. Dimensions may vary. Contents  
CMP / Rocna Anchors assumes no responsibility for the accuracy of the information contained herein. Product specifications are subject to  
This pattern is supplied to you for the explicit and sole purpose of evaluating the possible fit of a Rocna anchor on a vessel. Any other use  
copyright, patent, design, or other law. The Rocna Mk II anchor is patented as described on the label above.

The names "Rocna" and "Vulcan" are registered trademarks ® and the Rocna, "Kiwi-R", and Vulcan logos, and other terms marked with ™  
of Rocna Anchors. All distributable media, including video, graphics, photography, and all copy printed or electronic are copyright  
© 2004–2023 Rocna Anchors. All rights reserved.



Resources are available at **Rocna.com**.  
For assistance e-mail **support@rocna.com**.

based on the latest information available at the time of publication.  
subject to change without notice.  
use of this document may constitute a violation of

are trademarks

**MAXIMUM  
628 I**

**UPPER SURFACE OF FLUKE AT CENTER**

